

# SN74ALS2232A

## 64 × 8 ASYNCHRONOUS FIRST-IN, FIRST-OUT MEMORY

SCAS248 – FEBRUARY 1988 – REVISED MARCH 1990

- Independent Asynchronous Inputs and Outputs
- 64 Words by 8 Bits
- Data Rates From 0 to 40 MHz
- Fall-Through Time . . . 20 ns Typical
- 3-State Outputs

### description

This 512-bit memory uses advanced low-power Schottky IMPACT-X™ technology and features high speed and fast fall-through times. It is organized as 64 words by 8 bits.

A FIFO memory is a storage device that allows data to be written into and read from its array at independent data rates. The function is used as a buffer to couple two buses operating at different clock rates. This FIFO is designed to process data at rates from 0 to 40 MHz in a bit-parallel format, word by word.

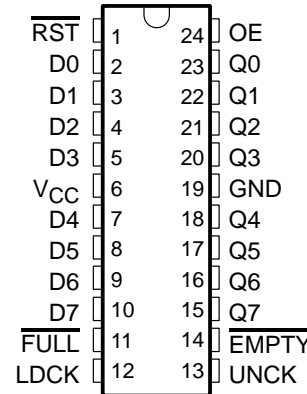
Data is written into memory on a low-to-high transition of the load clock (LDCK) input and is read out on a low-to-high transition of the unload clock (UNCK) input. The memory is full when the number of words clocked in exceeds by 64 the number of words clocked out. When the memory is full, LDCK signals have no effect on the data residing in memory. When the memory is empty, UNCK signals have no effect.

Status of the FIFO memory is monitored by the FULL and EMPTY output flags. The FULL output is low when the memory is full and high when the memory is not full. The EMPTY output is low when the memory is empty and high when it is not empty.

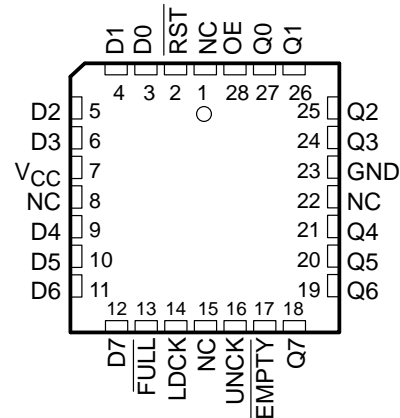
A low level on the reset (RST) input resets the internal stack control pointers and also sets EMPTY low and FULL high. The outputs are not reset to any specific logic levels. The first low-to-high transition on LDCK, either after a RST pulse or from an empty condition, causes EMPTY to go high and the data to appear on the Q outputs. The first word does not have to be unloaded. Data outputs are noninverting with respect to the data inputs and are at a high-impedance state when the output-enable (OE) input is low. The OE input does not effect either the FULL or EMPTY output flags. Cascading is easily accomplished in the word-width direction, but is not possible in the word-depth direction.

The SN74ALS2232A is characterized for operation from 0°C to 70°C.

NT PACKAGE  
(TOP VIEW)



FN PACKAGE  
(TOP VIEW)



NC – No internal connection



Please be aware that an important notice concerning availability, standard warranty, and use in critical applications of Texas Instruments semiconductor products and disclaimers thereto appears at the end of this data sheet.

IMPACT-X is a trademark of Texas Instruments Incorporated.

PRODUCTION DATA information is current as of publication date. Products conform to specifications per the terms of Texas Instruments standard warranty. Production processing does not necessarily include testing of all parameters.



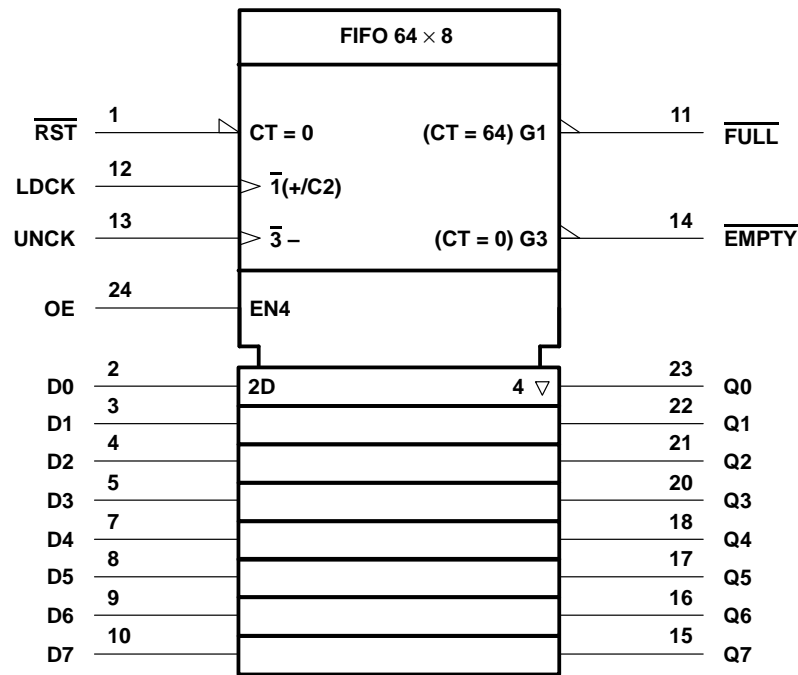
POST OFFICE BOX 655303 • DALLAS, TEXAS 75265

Copyright © 1990, Texas Instruments Incorporated

SN74ALS2232A  
64 × 8 ASYNCHRONOUS FIRST-IN, FIRST-OUT MEMORY

SCAS248 – FEBRUARY 1988 – REVISED MARCH 1990

logic symbol†



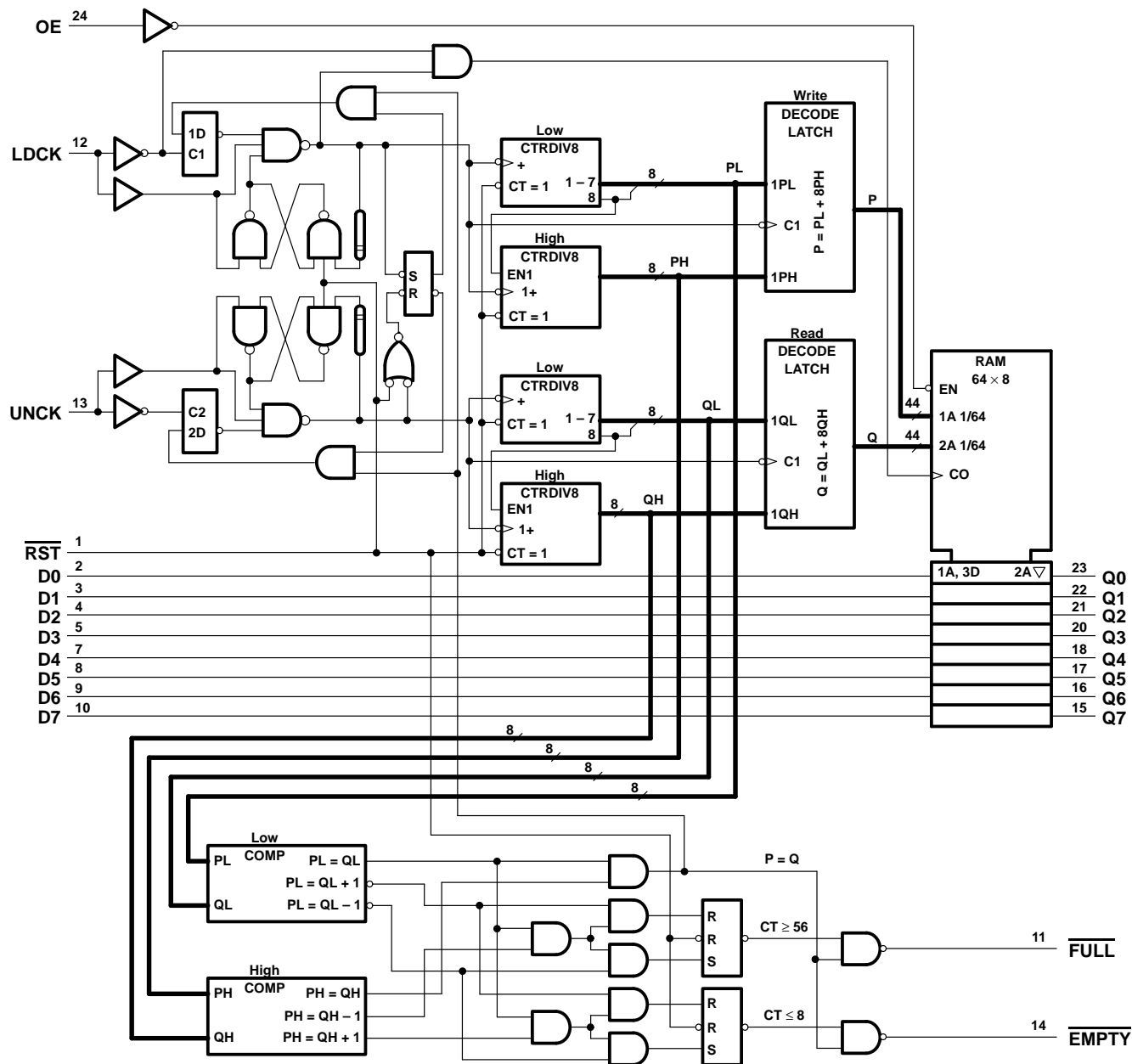
† This symbol is in accordance with ANSI/IEEE Standard 91-1984 and IEC Publication 617-12. The symbol is functionally accurate but does not show the details of implementation; for these, see the logic diagram. The symbol represents the memory as if it were controlled by a single counter whose content is the number of words stored at the time. Output data is invalid when the counter content (CT) is 0. Pin numbers shown are for the NT package.

# SN74ALS2232A

## 64 × 8 ASYNCHRONOUS FIRST-IN, FIRST-OUT MEMORY

SCAS248 – FEBRUARY 1988 – REVISED MARCH 1990

### logic diagram (positive logic)

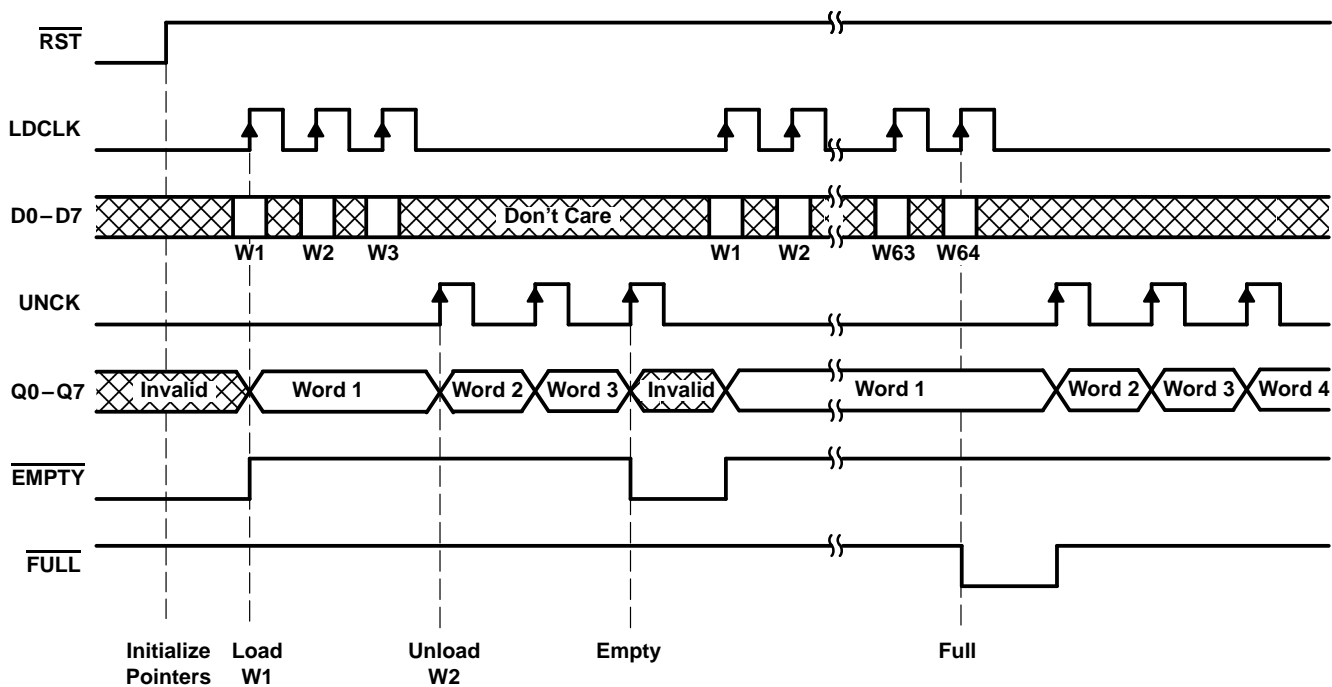


Pin numbers shown are for the NT package.

SN74ALS2232A  
64 × 8 ASYNCHRONOUS FIRST-IN, FIRST-OUT MEMORY

SCAS248 – FEBRUARY 1988 – REVISED MARCH 1990

timinig diagram



absolute maximum ratings over operating free-air temperature range (unless otherwise noted)<sup>†</sup>

Supply voltage, V <sub>CC</sub> (see Note 1)	7 V
Input voltage	7 V
Voltage applied to a disabled 3-state output	5.5 V
Operating free-air temperature range, T <sub>A</sub>	0°C to 70°C
Storage temperature range	– 65°C to 150°C

<sup>†</sup> Stresses beyond those listed under “absolute maximum ratings” may cause permanent damage to the device. This is a stress rating only, and functional operation of the device at these or any other conditions beyond those indicated in the “recommended operating conditions” section of this specification is not implied. Exposure to absolute-maximum-rated conditions for extended periods may affect device reliability.

NOTE 1: All voltage values are with respect to GND.

# SN74ALS2232A

## 64 × 8 ASYNCHRONOUS FIRST-IN, FIRST-OUT MEMORY

SCAS248 – FEBRUARY 1988 – REVISED MARCH 1990

### recommended operating conditions

			MIN	NOM	MAX	UNIT
V <sub>CC</sub>	Supply voltage		4.5	5	5.5	V
V <sub>IH</sub>	High-level input voltage		2			V
V <sub>IL</sub>	Low-level input voltage				0.8	V
I <sub>OH</sub>	High-level output current	Q outputs			–2.6	mA
		FULL, EMPTY			–0.4	
I <sub>OL</sub>	Low-level output current	Q outputs			24	mA
		FULL, EMPTY			8	
f <sub>clock</sub>	Clock frequency	LDCK, UNCK	0		40	MHz
t <sub>w</sub>	Pulse duration	RST low	25			ns
		LDCK low	13			
		LDCK high	12			
		UNCK low	13			
		UNCK high	12			
t <sub>su1</sub>	Setup time, data before LDCK↑		5			ns
t <sub>su2</sub>	Setup time, RST high (inactive) before LDCK↑		5			ns
t <sub>h</sub>	Hold time, data after LDCK↑		5			ns
T <sub>A</sub>	Operating free-air temperature		0		70	°C

### electrical characteristics over recommended operating free-air temperature range (unless otherwise noted)

PARAMETER		TEST CONDITION†		MIN	TYP‡	MAX	UNIT
V <sub>IK</sub>		V <sub>CC</sub> = 4.5 V,	I <sub>I</sub> = –18 mA			–1.2	V
V <sub>OH</sub>	Q outputs	V <sub>CC</sub> = 4.5 V,	I <sub>OH</sub> = –2.6 mA	2.4	3.2		V
	FULL, EMPTY	V <sub>CC</sub> = MIN to MAX,	I <sub>OH</sub> = 0.4 mA	V <sub>CC</sub> – 2			
V <sub>OL</sub>	Q outputs	V <sub>CC</sub> = 4.5 V	I <sub>OL</sub> = 12 mA		0.25	0.4	V
			I <sub>OL</sub> = 24 mA		0.35	0.5	
	FULL, EMPTY	V <sub>CC</sub> = 4.5 V	I <sub>OL</sub> = 4 mA		0.25	0.4	
			I <sub>OL</sub> = 8 mA		0.35	0.5	
I <sub>OZH</sub>		V <sub>CC</sub> = 5.5 V,	V <sub>O</sub> = 2.7 V			20	μA
I <sub>OZL</sub>		V <sub>CC</sub> = 5.5 V,	V <sub>O</sub> = 0.4 V			–20	μA
I <sub>I</sub>		V <sub>CC</sub> = 5.5 V,	V <sub>I</sub> = 7 V			0.1	mA
I <sub>IH</sub>		V <sub>CC</sub> = 5.5 V,	V <sub>I</sub> = 2.7 V			20	μA
I <sub>IL</sub>	CLKs	V <sub>CC</sub> = 5.5 V,	V <sub>I</sub> = 0.4 V			–0.2	mA
	Others					–0.1	
I <sub>O§</sub>	Q outputs	V <sub>CC</sub> = 5.5 V,	V <sub>O</sub> = 2.25 V	–20		–130	mA
	FULL, EMPTY			–20		–112	
I <sub>CC</sub>		V <sub>CC</sub> = 5.5 V			175	270	mA

† For conditions shown as MIN or MAX, use the appropriate value specified under recommended operating conditions.

‡ All typical values are at V<sub>CC</sub> = 5 V, T<sub>A</sub> = 25°C.

§ The output conditions have been chosen to produce a current that closely approximates one half of the true short-circuit output current, I<sub>OS</sub>.



# SN74ALS2232A

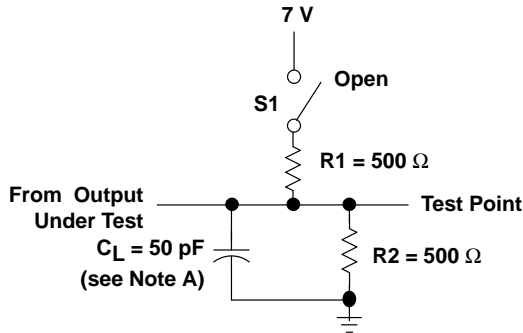
## 64 × 8 ASYNCHRONOUS FIRST-IN, FIRST-OUT MEMORY

SCAS248 – FEBRUARY 1988 – REVISED MARCH 1990

### switching characteristics (see Figure 1)

PARAMETER	FROM (INPUT)	TO (OUTPUT)	V <sub>CC</sub> = 5 V, C <sub>L</sub> = 50 pF, R1 = 500 Ω, R2 = 500 Ω, T <sub>A</sub> = 25°C			V <sub>CC</sub> = 4.5 V to 5.5 V, C <sub>L</sub> = 50 pF, R1 = 500 Ω, R2 = 500 Ω, T <sub>A</sub> = 0°C to 70°C		UNIT
			MAX	TYP	MAX	MIN	MAX	
f <sub>max</sub>	LDCK, UNCK					40		MHz
t <sub>pd</sub>	LDCK↑	Any Q		18	26		30	ns
	UNCK↑			18	24		27	
t <sub>PLH</sub>	LDCK↑	<u>EMPTY</u>		12	16		18	ns
t <sub>PHL</sub>	UNCK↑			12	17		20	
t <sub>PHL</sub>	<u>RST</u> ↓	<u>EMPTY</u>		12	17		20	ns
t <sub>PHL</sub>	LDCK↑	<u>FULL</u>		16	21		22	ns
t <sub>PLH</sub>	UNCK↑	<u>FULL</u>		10	15		18	ns
	<u>RST</u> ↓			13	19		23	
t <sub>en</sub>	OE↑	Q		11	15		17	ns
t <sub>dis</sub>	OE↓	Q		11	17		19	ns

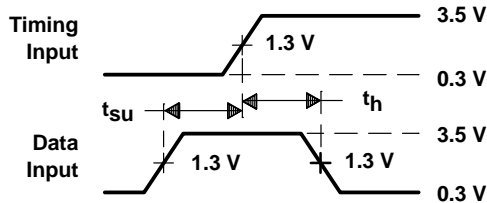
## PARAMETER MEASUREMENT INFORMATION



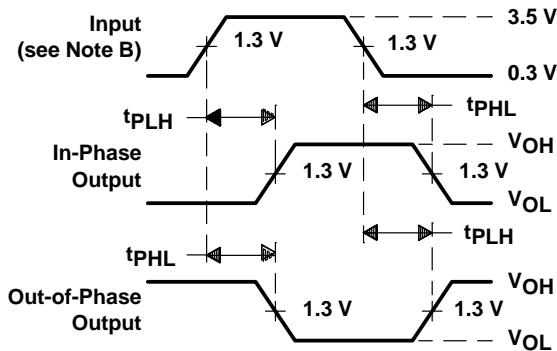
**LOAD CIRCUIT FOR 3-STATE OUTPUTS**

**SWITCH POSITION TABLE**

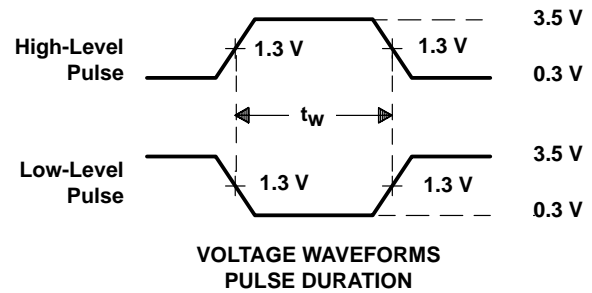
TEST	S1
$t_{PLH}$	Open
$t_{PHL}$	Open
$t_{PZH}$	Open
$t_{PZL}$	Closed
$t_{PHZ}$	Open
$t_{PLZ}$	Closed



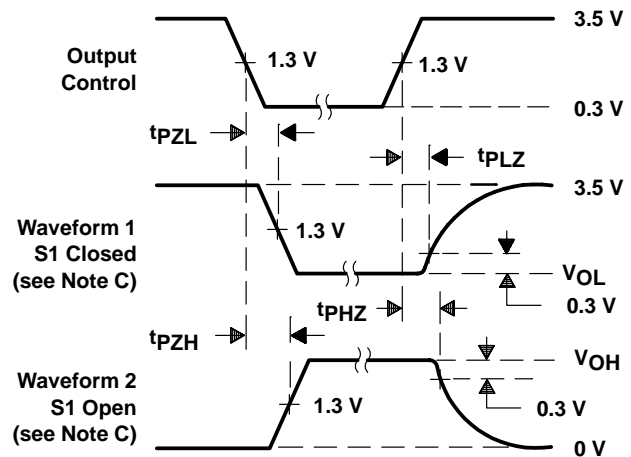
**VOLTAGE WAVEFORMS  
SETUP AND HOLD TIMES**



**VOLTAGE WAVEFORMS  
PROPAGATION DELAY TIMES**



**VOLTAGE WAVEFORMS  
PULSE DURATION**



**VOLTAGE WAVEFORMS  
ENABLE AND DISABLE TIMES, 3-STATE OUTPUTS**

- NOTES: A.  $C_L$  includes probe and jig capacitance.  
 B. All input pulses are supplied by generators having the following characteristics:  $PRR \leq 1 \text{ MHz}$ ,  $Z_O = 50 \Omega$ ,  $t_r \leq 2 \text{ ns}$ ,  $t_f \leq 2 \text{ ns}$ .  
 C. Waveform 1 is for an output with internal conditions such that the output is low except when disabled by the output control. Waveform 2 is for an output with internal conditions such that the output is high except when disabled by the output control.  
 D. The outputs are measured one at a time with one transition per measurement.

**Figure 1. Load Circuit and Voltage Waveforms**





## **IMPORTANT NOTICE**

Texas Instruments (TI) reserves the right to make changes to its products or to discontinue any semiconductor product or service without notice, and advises its customers to obtain the latest version of relevant information to verify, before placing orders, that the information being relied on is current.

TI warrants performance of its semiconductor products and related software to the specifications applicable at the time of sale in accordance with TI's standard warranty. Testing and other quality control techniques are utilized to the extent TI deems necessary to support this warranty. Specific testing of all parameters of each device is not necessarily performed, except those mandated by government requirements.

Certain applications using semiconductor products may involve potential risks of death, personal injury, or severe property or environmental damage ("Critical Applications").

**TI SEMICONDUCTOR PRODUCTS ARE NOT DESIGNED, INTENDED, AUTHORIZED, OR WARRANTED TO BE SUITABLE FOR USE IN LIFE-SUPPORT APPLICATIONS, DEVICES OR SYSTEMS OR OTHER CRITICAL APPLICATIONS.**

Inclusion of TI products in such applications is understood to be fully at the risk of the customer. Use of TI products in such applications requires the written approval of an appropriate TI officer. Questions concerning potential risk applications should be directed to TI through a local SC sales office.

In order to minimize risks associated with the customer's applications, adequate design and operating safeguards should be provided by the customer to minimize inherent or procedural hazards.

TI assumes no liability for applications assistance, customer product design, software performance, or infringement of patents or services described herein. Nor does TI warrant or represent that any license, either express or implied, is granted under any patent right, copyright, mask work right, or other intellectual property right of TI covering or relating to any combination, machine, or process in which such semiconductor products or services might be or are used.