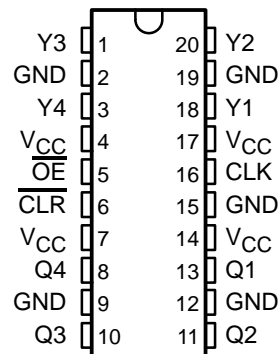


# CDC337 CLOCK DRIVER WITH 3-STATE OUTPUTS

SCAS330A – DECEMBER 1990 – REVISED NOVEMBER 1995

- Low Output Skew, Low Pulse Skew for Clock-Distribution and Clock-Generation Applications
- TTL-Compatible Inputs and CMOS-Compatible Outputs
- Distributes One Clock Input to Eight Outputs
  - Four Same-Frequency Outputs
  - Four Half-Frequency Outputs
- Distributed  $V_{CC}$  and Ground Pins Reduce Switching Noise
- High-Drive Outputs ( $-48\text{-mA } I_{OH}$ ,  $48\text{-mA } I_{OL}$ )
- State-of-the-Art *EPIC-II B*<sup>™</sup> BiCMOS Design Significantly Reduces Power Dissipation
- Package Options Include Plastic Small-Outline (DW) and Shrink Small-Outline (DB) Packages

DB OR DW PACKAGE  
(TOP VIEW)



## description

The CDC337 is a high-performance, low-skew clock driver. It is specifically designed for applications requiring synchronized output signals at both the clock frequency and one-half the clock frequency. The four Y outputs switch in phase and at the same frequency as the clock (CLK) input. The four Q outputs switch at one-half the frequency of CLK.

When the output-enable ( $\overline{OE}$ ) input is low and the clear ( $\overline{CLR}$ ) input is high, the Y outputs follow CLK and the Q outputs toggle on low-to-high transitions at CLK. Taking  $\overline{CLR}$  low asynchronously resets the Q outputs to the low level. When  $\overline{OE}$  is high, the outputs are in the high-impedance state.

The CDC337 is characterized for operation from  $-40^{\circ}\text{C}$  to  $85^{\circ}\text{C}$ .

FUNCTION TABLE

INPUTS			OUTPUTS	
$\overline{OE}$	$\overline{CLR}$	CLK	Y1–Y4	Q1–Q4
H	X	X	Z	Z
L	L	L	L	L
L	L	H	H	L
L	H	L	L	$Q_0^{\dagger}$
L	H	$\uparrow$	H	$\overline{Q}_0^{\dagger}$

<sup>†</sup>The level of the Q outputs before the indicated steady-state input conditions were established



Please be aware that an important notice concerning availability, standard warranty, and use in critical applications of Texas Instruments semiconductor products and disclaimers thereto appears at the end of this data sheet.

EPIC-II B is a trademark of Texas Instruments Incorporated.

PRODUCTION DATA information is current as of publication date. Products conform to specifications per the terms of Texas Instruments standard warranty. Production processing does not necessarily include testing of all parameters.

**TEXAS  
INSTRUMENTS**

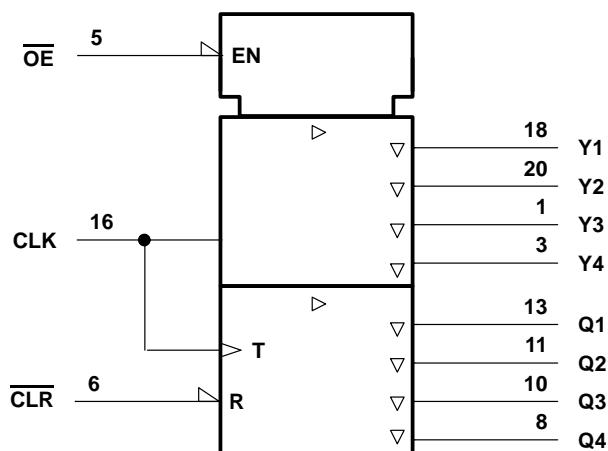
POST OFFICE BOX 655303 • DALLAS, TEXAS 75265

Copyright © 1995, Texas Instruments Incorporated

# CDC337 CLOCK DRIVER WITH 3-STATE OUTPUTS

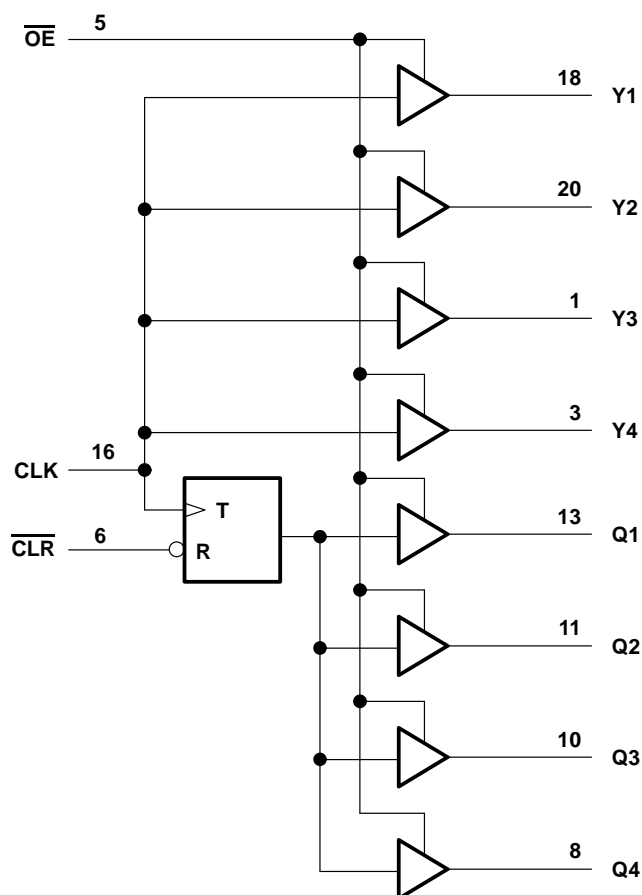
SCAS330A – DECEMBER 1990 – REVISED NOVEMBER 1995

## logic symbol†



† This symbol is in accordance with ANSI/IEEE Std 91-1984 and IEC Publication 617-12.

## logic diagram (positive logic)



## absolute maximum ratings over operating free-air temperature range (unless otherwise noted)‡

Supply voltage range, $V_{CC}$	–0.5 V to 7 V
Input voltage range, $V_I$ (see Note 1)	–0.5 V to 7 V
Voltage range applied to any output in the high state or power-off state, $V_O$ (see Note 1)	–0.5 V to $V_{CC} + 0.5$ V
Current into any output in the low state, $I_O$	96 mA
Input clamp current, $I_{IK}$ ( $V_I < 0$ )	–18 mA
Maximum power dissipation at $T_A = 55^\circ\text{C}$ (in still air) (see Note 2): DB package	0.6 W
DW package	1.6 W
Storage temperature range, $T_{stg}$	–65°C to 150°C

‡ Stresses beyond those listed under “absolute maximum ratings” may cause permanent damage to the device. These are stress ratings only, and functional operation of the device at these or any other conditions beyond those indicated under “recommended operating conditions” is not implied. Exposure to absolute-maximum-rated conditions for extended periods may affect device reliability.

NOTES: 1. The input and output negative-voltage ratings may be exceeded if the input and output clamp-current ratings are observed.  
2. The maximum package power dissipation is calculated using a junction temperature of 150°C and a board trace length of 750 mils. For more information, refer to the *Package Thermal Considerations* application note in the 1994 *ABT Advanced BiCMOS Technology Data Book*, literature number SCBD002B.

# CDC337 CLOCK DRIVER WITH 3-STATE OUTPUTS

SCAS330A – DECEMBER 1990 – REVISED NOVEMBER 1995

## recommended operating conditions (see Note 3)

		MIN	MAX	UNIT
$V_{CC}$	Supply voltage	4.75	5.25	V
$V_{IH}$	High-level input voltage	2		V
$V_{IL}$	Low-level input voltage		0.8	V
$V_I$	Input voltage	0	$V_{CC}$	V
$I_{OH}$	High-level output current		-48	mA
$I_{OL}$	Low-level output current		48	mA
$f_{clock}$	Input clock frequency		80	MHz
$T_A$	Operating free-air temperature	-40	85	°C

NOTE 3: Unused pins (input or I/O) must be held high or low to prevent them from floating.

## electrical characteristics over recommended operating free-air temperature range (unless otherwise noted)

PARAMETER	TEST CONDITIONS		MIN	TYP†	MAX	UNIT
$V_{IK}$	$V_{CC} = 4.75$ V,	$I_I = -18$ mA			-1.2	V
$V_{OH}$	$V_{CC} = 4.75$ V,	$I_{OH} = -32$ mA	3.75			V
$V_{OL}$	$V_{CC} = 4.75$ V,	$I_{OL} = 32$ mA			0.55	V
$I_{IH}$	$V_{CC} = 5.25$ V,	$V_I = 2.7$ V			50	μA
$I_{IL}$	$V_{CC} = 5.25$ V,	$V_I = 0.5$ V			-50	μA
$I_{OZ}$	$V_{CC} = 5.25$ V,	$V_O = V_{CC}$ or GND			±50	μA
$I_{CC}$	$V_{CC} = 5.25$ V, $V_I = V_{CC}$ or GND	$I_O = 0$ , Outputs high			70	mA
		Outputs low			85	
		Outputs disabled			70	
$C_i$	$V_I = 2.5$ V or 0.5 V			3		pF
$C_o$	$V_O = V_{CC}$ or GND			10		pF

† All typical values are at  $V_{CC} = 5$  V,  $T_A = 25^\circ\text{C}$ .

## timing requirements over recommended ranges of supply voltage and operating free-air temperature (unless otherwise noted)

		MIN	MAX	UNIT
$f_{clock}$	Clock frequency		80	MHz
$t_w$	Pulse duration	CLR low	4	ns
		CLK low	4	
		CLK high	4	
$t_{su}$	Setup time, CLR inactive before CLK↑	2		ns
	Clock duty cycle	40%	60%	



# CDC337

## CLOCK DRIVER

### WITH 3-STATE OUTPUTS

SCAS330A – DECEMBER 1990 – REVISED NOVEMBER 1995

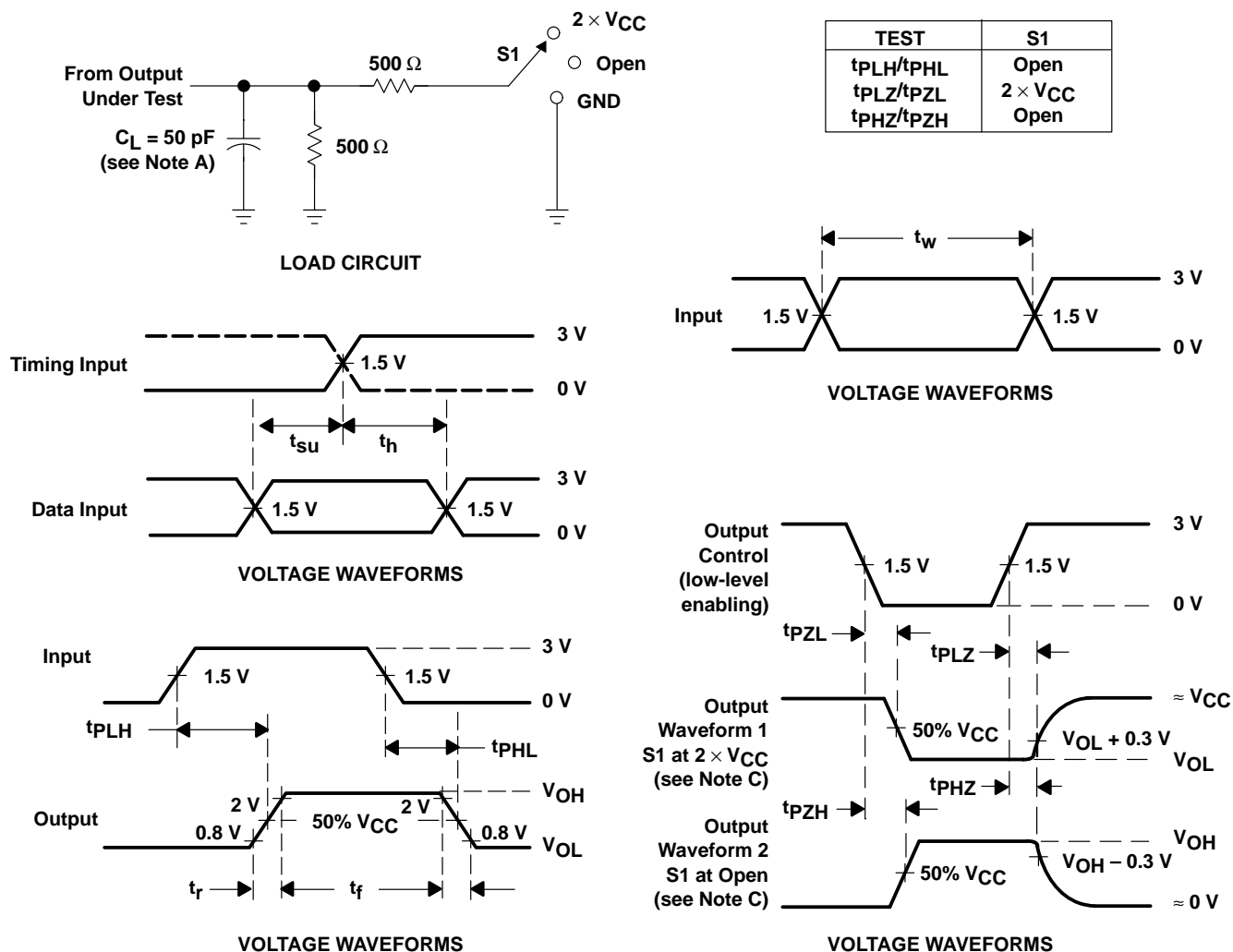
switching characteristics over recommended ranges of supply voltage and operating free-air temperature,  $C_L = 50$  pF (unless otherwise noted) (see Note 4 and Figures 1 and 2)

PARAMETER	FROM (INPUT)	TO (OUTPUT)	MIN	TYP†	MAX	UNIT
$f_{max}$			80			MHz
$t_{PLH}$	CLK	Any Y or Q	4		9	ns
$t_{PHL}$			4		9	
$t_{PHL}$	$\overline{CLR}$	Any Q	4		10	ns
$t_{PZH}$	$\overline{OE}$	Any Y or Q	3		7	ns
$t_{PZL}$			3		7	
$t_{PHZ}$	$\overline{OE}$	Any Y or Q	2		7	ns
$t_{PLZ}$			2		7	
$t_{sk(o)}$	CLK↑	Y↑			0.75	ns
		Q↑			0.9	
		Y↑ and Q↑			0.9	
$t_r$				0.9		ns
$t_f$				0.7		ns

† All typical values are at  $V_{CC} = 5$  V,  $T_A = 25^\circ\text{C}$ .

NOTE 4: All specifications are valid only for all outputs switching.

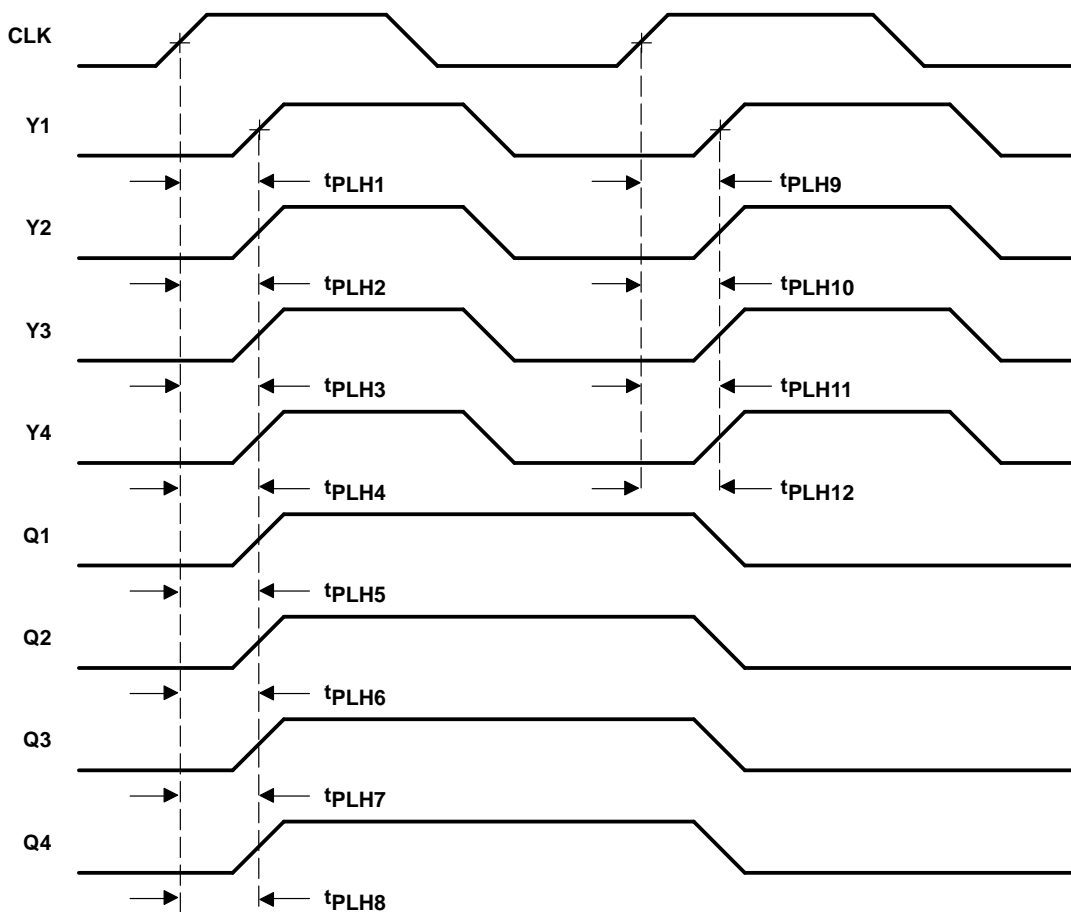
## PARAMETER MEASUREMENT INFORMATION



- NOTES:
- A.  $C_L$  includes probe and jig capacitance.
  - B. All input pulses are supplied by generators having the following characteristics:  $PRR \leq 10 \text{ MHz}$ ,  $Z_O = 50 \Omega$ ,  $t_r \leq 2.5 \text{ ns}$ ,  $t_f \leq 2.5 \text{ ns}$ .
  - C. Waveform 1 is for an output with internal conditions such that the output is low except when disabled by the output control. Waveform 2 is for an output with internal conditions such that the output is high except when disabled by the output control.
  - D. The outputs are measured one at a time with one transition per measurement.

**Figure 1. Load Circuit and Voltage Waveforms**

## PARAMETER MEASUREMENT INFORMATION



- NOTES: A. Output skew,  $t_{sk(o)}$ , from  $CLK\uparrow$  to  $Y\uparrow$ , is calculated as the greater of the difference between the fastest and slowest of  $t_{PLHn}$  ( $n = 1, 2, 3, 4$ ) or  $t_{PLHn}$  ( $n = 9, 10, 11, 12$ ).
- B. Output skew,  $t_{sk(o)}$ , from  $CLK\uparrow$  to  $Q\uparrow$ , is calculated as the greater of the difference between the fastest and slowest of  $t_{PLHn}$  ( $n = 5, 6, 7, 8$ ).
- C. Output skew,  $t_{sk(o)}$ , from  $CLK\uparrow$  to  $Y\uparrow$  and  $Q\uparrow$ , is calculated as the greater of the difference between the fastest and slowest of  $t_{PLHn}$  ( $n = 1, 2, \dots, 8$ ).

**Figure 2. Waveforms for Calculation of  $t_{sk(o)}$**

## **IMPORTANT NOTICE**

Texas Instruments (TI) reserves the right to make changes to its products or to discontinue any semiconductor product or service without notice, and advises its customers to obtain the latest version of relevant information to verify, before placing orders, that the information being relied on is current.

TI warrants performance of its semiconductor products and related software to the specifications applicable at the time of sale in accordance with TI's standard warranty. Testing and other quality control techniques are utilized to the extent TI deems necessary to support this warranty. Specific testing of all parameters of each device is not necessarily performed, except those mandated by government requirements.

Certain applications using semiconductor products may involve potential risks of death, personal injury, or severe property or environmental damage ("Critical Applications").

**TI SEMICONDUCTOR PRODUCTS ARE NOT DESIGNED, INTENDED, AUTHORIZED, OR WARRANTED TO BE SUITABLE FOR USE IN LIFE-SUPPORT APPLICATIONS, DEVICES OR SYSTEMS OR OTHER CRITICAL APPLICATIONS.**

Inclusion of TI products in such applications is understood to be fully at the risk of the customer. Use of TI products in such applications requires the written approval of an appropriate TI officer. Questions concerning potential risk applications should be directed to TI through a local SC sales office.

In order to minimize risks associated with the customer's applications, adequate design and operating safeguards should be provided by the customer to minimize inherent or procedural hazards.

TI assumes no liability for applications assistance, customer product design, software performance, or infringement of patents or services described herein. Nor does TI warrant or represent that any license, either express or implied, is granted under any patent right, copyright, mask work right, or other intellectual property right of TI covering or relating to any combination, machine, or process in which such semiconductor products or services might be or are used.